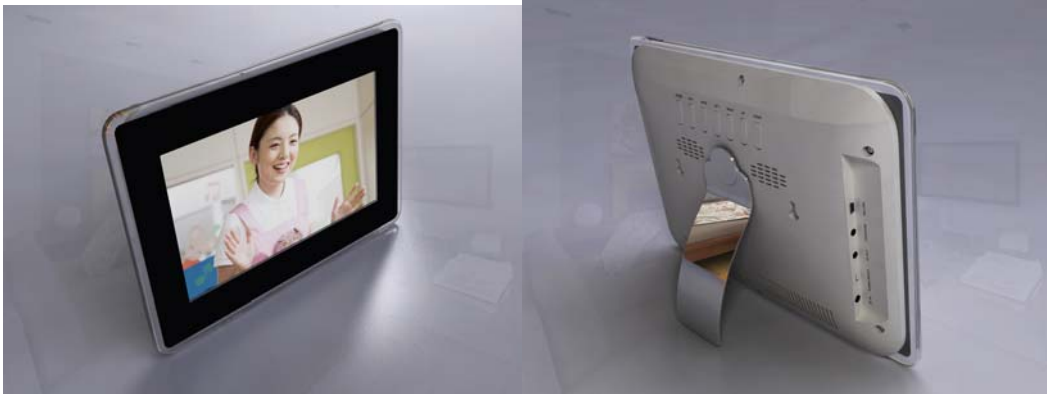


10.2-inch WiFi digital photo frame

Quick Start Guide



Function

WiFi digital photo frame supports P2P file transfer from PC to frame

Send videos/images to wifi digital photo frame from laptop with installed PC application software (frameshare), by communicating with the login server of wifi digital frames, users can monitor which frame is active, drag and drop the video/images to the active frame icons, the file transferring starts.

Videos/Images downloaded into on-board memory for uninterrupted playback

Play the latest incoming files automatically. As the incoming videos/pictures are saved in the on-board memory (1G/2G,/4G,/8GB), the frame stays isolated and uninterrupted from unstable wifi connectivity. This makes it as a best **wifi wireless advertising player**.

Easy file management

Delete the videos/images in the frame with remote control

Integrated file transcoding and resizing for optimized display performance

Every file will be transcoded and resized to make it compatible with the wifi frame decoder and play the file for the best display quality, this is done automatically before uploading (Auto-Best Formatting)

Built-in weather station

Choose your location, the wifi digital frame displays the weather forecast updated from internet source

Social networking wifi digital photo frame

The PC application frameshare software has Built-in Flickr, Phanfare, Picasa, Smugmug API, let users synchronize the photos on the social network accounts and the frame.

Features:

- 10.2-inch digital TFT-LCD display
- Build-in 802.11g
- Built-in 2GB flash memory(1G,2G, 4G, 8G)

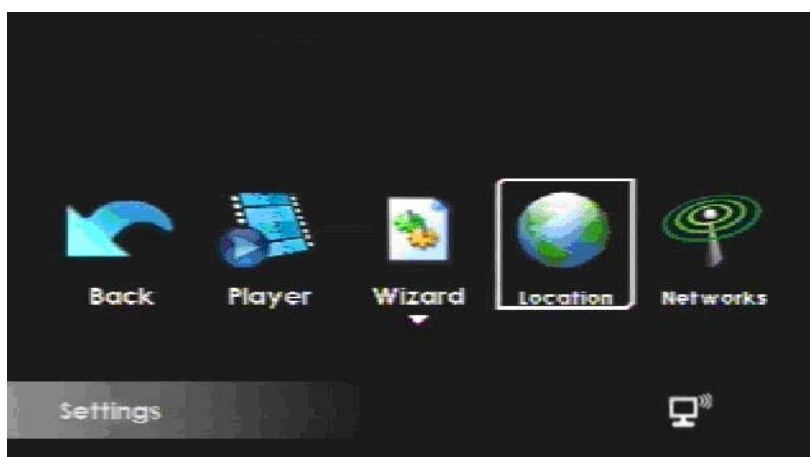
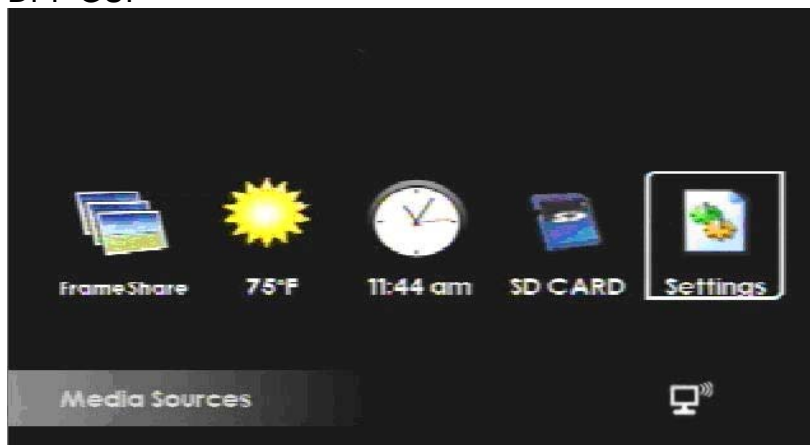
- SD card reader
- USB host
- USB OTG
- Color, Contrast and Brightness adjustments

PC software Manager

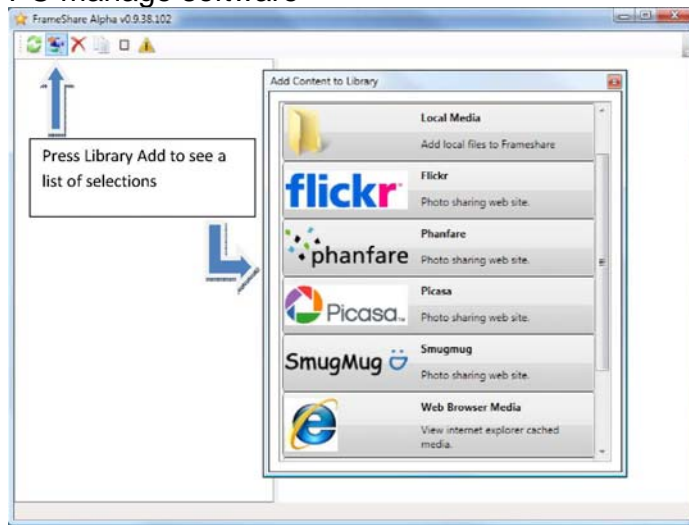
- Windows XP SP2 and later, Vista
- Collect local, network and Internet media content in one application to create albums to send to friends and family
- Connect directly with active wifi DPF(PC and wifi DPF synchronize via connecting to login server)
- Send albums directly to the DPF via Peer to Peer file transfer
- New content starts playing automatically after downloading finished
- Auto-Best Formatting(transcoding)
- All content is formatted specifically for the DPF prior to sending
- Incompatible media files are converted into compatible formats
- Built-in Flickr, Phanfare, Picasa, Smugmug API, collect photo from your account automatically
- Drag the photo from local PC or from online album, easily to send photo, video

How it Works

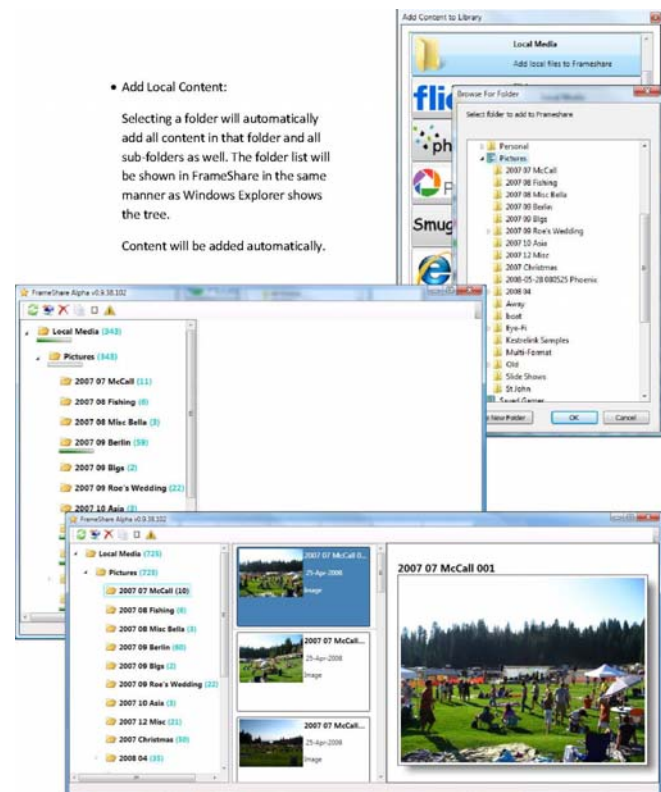
DPF GUI



PC manage software



Selecting a folder will automatically add all content in that folder and all sub-folders as well. The folder list will be shown in FrameShare in the same manner as Windows Explorer shows the tree.



- Add Local Content:

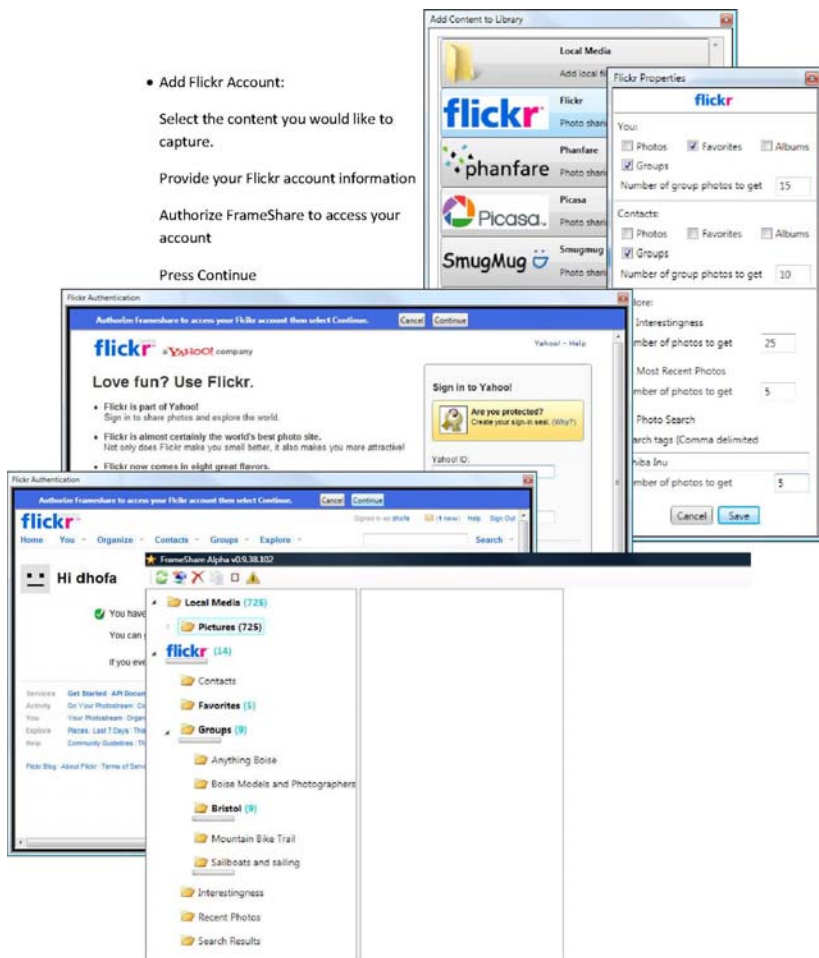
Selecting a folder will automatically add all content in that folder and all sub-folders as well. The folder list will be shown in FrameShare in the same manner as Windows Explorer shows the tree.

Content will be added automatically.

Content will be added automatically.

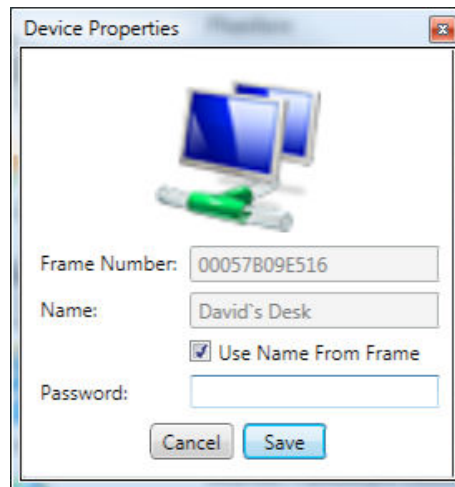
- Add Flickr Account:

Select the content you would like to capture. Provide your Flickr account information
Authorize FrameShare to access your account Press continue



- Add Flickr Account:
Select the content you would like to capture.
Provide your Flickr account information
Authorize FrameShare to access your account
Press Continue

- If you have accounts with PhanFare, Picasa or SmugMug, add these and enter your account information:
As you add accounts, an automatic sync will start to gather content from each.
- Add Web Browser Media: Set the Minimum image and video sizes in order to control what types of content are available through FrameShare
Any image or video that you view using Internet Explorer that is larger than the sizes you choose will be available to include in FrameShare Albums.
- Add Local wifi DPFs:
At the bottom of the Add Content Library menu, all frameshare DPFs that are connected to the same WiFi access point as the PC where FrameShare is running will be displayed. Click on the DPF you wish to add.



Choose a name for the album, set the number of rows and columns for the Thumbnail page, and choose the maximum length for any video clips that are to be included in the album, then press Save.

Next, drag and drop pictures and videos from the content sources you have already added to FrameShare into the Album folder under the frame name. The next time you refresh FrameShare, this album will be sent to the DPF so long as that DPF is online and the FrameShare PC is connected to the Internet.